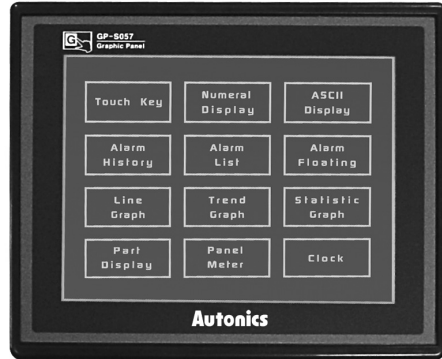


High Visibility With 5.7 Inch Wide Screen and Extended Data Utility Range Graphic Panel GP-S057

■ Features

- Displays max. 1590 characters
- Enables to save max. 500 pages of user screen
- Easy software upgrade available on website
 - (1) GP firmware file
 - (2) GP Editor (drawing program)
 - (3) Additional protocol
- Different devices monitoring function
 - : Allows to monitor and control the variables of additionally connected controllers (such as PLC) with external communication port
- Supports multilingual
 - : Supports Korean, Japanese, English, Chinese, Russian, Vietnamese and Portuguese.
 - Additional languages will be available by firmware.
- Supports multi-font
 - : It provides various bitmap and user-selected fonts.
- Various multi-communication port
 - : Both RS232C 2 port or RS232C/RS422 compound port are provided.
- Device monitoring function
 - : It enables to monitor GP devices and connected controller devices by GP without graphic design data.
- Printer and barcode reader connection
 - : It enables to print alarm history connecting a printer and read barcode connecting a barcode reader.
- Compact design
 - : Minimizes module size and installation places by 5.7 inch display area
- Various display function
 - : It displays data by various tags.



5.7 inch MONO

Please read "Safety Considerations" in instruction manual before using.



■ Manual

For the detail information and instructions, please refer to user manual and user manual for communication, and be sure to follow cautions written in the technical descriptions (catalog, homepage). Visit our homepage (www.autonics.com) to download manuals.


- **GP Editor user manual**
It describes how to write screen data, and is about related usage of GP-S057 HMI function.
- **GP, LP user manual for communication**
It describes connection for external devices such as PLC.
- **GP-S044/S057 user manual**
It describes general information on the installation and usage of GP-S057 and system contents.

■ Ordering Information

Model	Item	Series	Monitor size	Display unit	Color	Power supply	Interface
GP-S057-S1D0	Graphic panel	S series	5.7 inch	STN LCD	MONO (blue, white)	24VDC	Each port of RS232C, RS422
GP-S057-S1D1							Two ports of RS232C

- (A) Photoelectric Sensors
- (B) Fiber Optic Sensors
- (C) Door/Area Sensors
- (D) Proximity Sensors
- (E) Pressure Sensors
- (F) Rotary Encoders
- (G) Connectors/ Connector Cables/ Sensor Distribution Boxes/ Sockets
- (H) Temperature Controllers
- (I) SSRs / Power Controllers
- (J) Counters
- (K) Timers
- (L) Panel Meters
- (M) Tacho / Speed / Pulse Meters
- (N) Display Units
- (O) Sensor Controllers
- (P) Switching Mode Power Supplies
- (Q) Stepper Motors & Drivers & Controllers
- (R) Graphic/ Logic Panels
- (S) Field Network Devices
- (T) Software

■ Specifications

Model	GP-S057-S1D0	GP-S057-S1D1
Power supply	24VDC=	
Allowable voltage range	90 to 110% of power supply	
Power consumption	Max. 3.6W	
Display performance	LCD type	5.7 inch STN blue negative
	Resolution	320×240 dots
	Display area	119×91mm
	Color	MONO (blue, white)
	LCD view angle	Top/Bottom/Left/Right within 30°in each direction
	Backlight	White LED
	Brightness	Adjustable by software
Graphic drawing performance	Language ^{※1}	English, Korean, Japanese, Chinese, Russian, Vietnamese, Portuguese
	Text	• High resolution display up to 1590 letters (6×8 font) • 6×8, 8×8 ASCII character, high definition numbers • 8×16 ASCII characters, 16×16 character by each country (1-8 times bigger for width, 0.5-5 times bigger for height)
	Graphic drawing memory	512 KB
	Number of user screen	500 pages
	Touch switch	Width 16×Height 12 = 192
Serial interface	Each port of RS232C, RS422 (asynchronous method)	Two ports of RS232C (asynchronous method)
Real-time controller	RTC embedded	
Battery life cycle	Approx. 3 years at 25°C	
Insulation resistance	Over 100MΩ (at 500VDC megger)	
Ground	3rd grounding (max. 100Ω)	
Noise immunity	± 0.5kV the square wave noise (pulse width: 1μs) by the noise simulator	
Dielectric strength	500VAC (50/60Hz) for 1 min	
Vibration	Mechanical	0.75mm amplitude at frequency of 10 to 55Hz (for 1 min) in each X, Y, Z direction for 1 hour
	Malfuction	0.5mm amplitude at frequency of 10 to 55Hz (for 1 min) in each X, Y, Z direction for 10 min
Shock	Mechanical	300m/s ² (approx. 30G) in each X, Y, Z direction for 3 times
	Malfuction	100m/s ² (approx. 10G) in each X, Y, Z direction for 3 times
Environ-ment	Ambient temperature	0 to 50°C, storage: -20 to 60°C
	Ambient humidity	35 to 85%RH, storage: 35 to 85%RH
Protection structure	IP65 (front panel, IEC standard)	
Accessory	Fixing bracket: 4, waterproof rubber ring, battery (included)	
Approval	CE 	
Weight ^{※2}	Approx. 565g (approx. 386g)	

※1: Supported language can be added.

※2: The weight includes packaging. The weight in parenthesis is for unit only.

※Environment resistance is rated at no freezing or condensation.

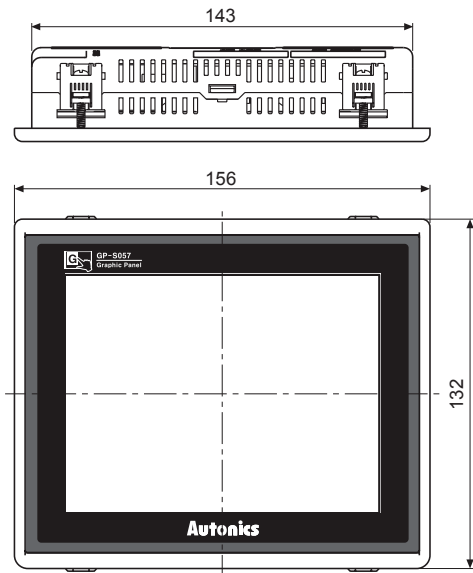
■ Functional Description

Figure display	Line, rectangle, circle, text, bitmap	
Tags	Numeral display	Displays the designated device as numerical value. (decimal, hexadecimal, octal, binary, real number)
	ASCII display	Displays the designated device value as ASCII character.
	Time display	Displays current time or date.
	Alarm history	Registers alarm history.
	Alarm list	Displays generated (not backed up) alarm.
	Comment display	Displays the designated comment as device status or value.
	Lamp	Displays lamp as device status.
	Part display	Displays the designated parts as device status and value.
	Line graph	Displays several device values with a graph of broken line.
	Trend graph	Displays change of device value for time with a graph of broken line.
	Bar graph	Displays a device value with a bar graph.
	Statistic graph	Displays a ratio of several device values with pie graph.
	Panel meter	Displays a device value as panel meter.
	Touch key	Screen is switched, word/bit device values are set when it touched.
Numeral input	Configures user input value in device.	
ASCII input	Configures user input ASCII code value in device.	
System information function	Monitors/Controls GP operation from PLC.	
Recipe function	Reads/Writes several PLC device collectively.	
Security function	Only acceptable user can observe/operate important data.	
Barcode read function	Connects barcode reader, read barcode.	
Floating alarm function	Warning message is floated when alarm is generated.	
Time operation	Specific bit device is ON/OFF for designated day and time.	
Overlap window	Available to form dynamically overlapping another base screen on the base one.	
Observe status function	Changes PLC device status/value of PLC when trigger is generated.	

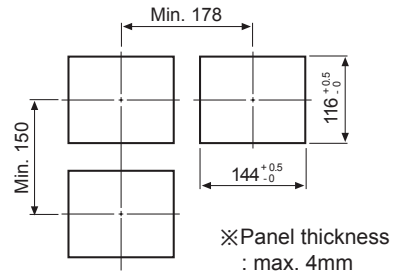
Graphic Panel

■ Dimensions

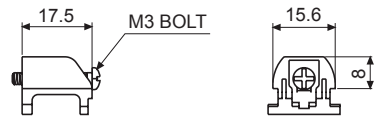
(unit: mm)



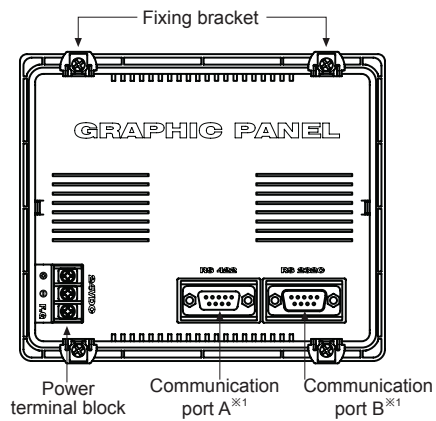
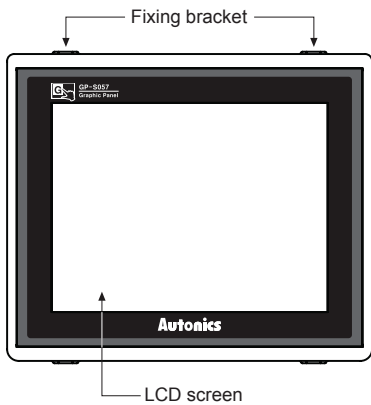
● Panel cut-out



● Fixing bracket



■ Unit Description



※1: Communication port

Communication port	Port A	Port B
Model	Port A	Port B
GP-S057-S1D0	RS422	RS232C
GP-S057-S1D1	RS232C-A	RS232C-B

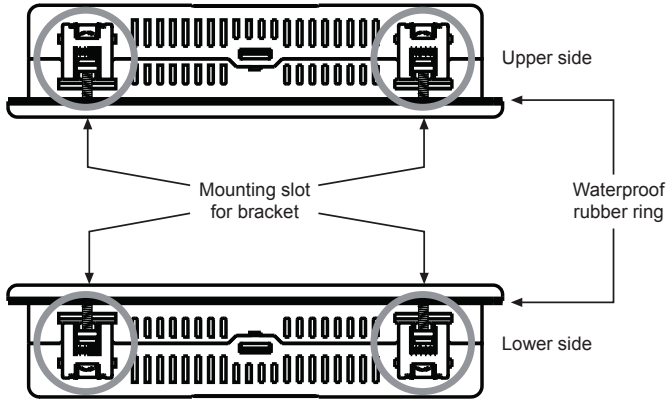
※For more information, refer to 'Serial Interface' of GP/LP Common Features.

(A)	Photoelectric Sensors
(B)	Fiber Optic Sensors
(C)	Door/Area Sensors
(D)	Proximity Sensors
(E)	Pressure Sensors
(F)	Rotary Encoders
(G)	Connectors/ Connector Cables/ Sensor Distribution Boxes/ Sockets
(H)	Temperature Controllers
(I)	SSRs / Power Controllers
(J)	Counters
(K)	Timers
(L)	Panel Meters
(M)	Tacho / Speed / Pulse Meters
(N)	Display Units
(O)	Sensor Controllers
(P)	Switching Mode Power Supplies
(Q)	Stepper Motors & Drivers & Controllers
(R)	Graphic/ Logic Panels
(S)	Field Network Devices
(T)	Software

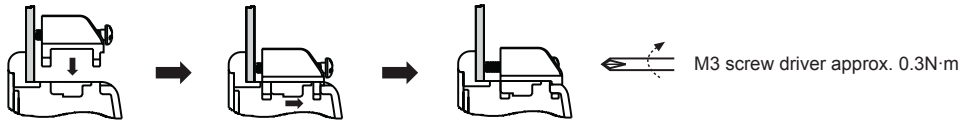
GP-S057

■ Installation

1. Set a waterproof rubber ring after placing the joining part of the ring under the GP-S057.
2. Adhere closely between each edge of the GP-S057 and the rings.
3. Set GP-S057 in panel.
4. Set the fixing bracket to 4 bracket slots and fix them with the screw of the bracket.



● Fixing bracket



■ Cable (sold separately)

Serial connection cables which connect GP/LP with PLC or other external devices are sold separately. Refer to "GP/LP Communication Cables".