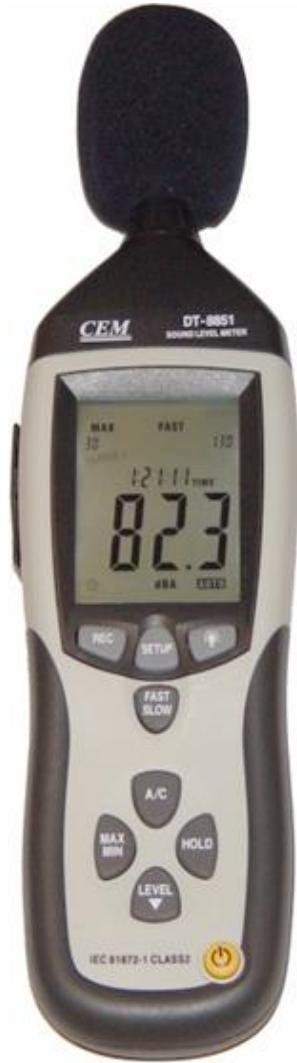




DT-8851/52



1.	1
1.1.	1
1.2.	1
2.	1
3.	2
4.	2
5.	3
5.1.	3
5.2.	3
6.	5
6.1.	5
6.2.	5
6.3.	5
6.4.	5
6.5.	5
6.6.	5
6.7.	7
6.7.1.	7
6.7.2.	USB	7
7.	7
7.1.	7
7.2.	7
8.	7
8.1.	7
8.2.	8

1

-
-
-
-
-
-
-
-

DT-8851

/

(8852)

(8852)

1.1

1.2

-
-
-
-
-
-
-
-
-
-
-
-
-
-
-
-
-
-

2000
90%RH
0-40°

2

DT-8851/8852

2.1

2.1

	DT-8851	DT-8852
(-)	•	•

(-)	•	•
	•	•
	•	•
	•	•
	•	•
/	•	•
1	•	•
2	•	•
	•	•
		•
		•
		•
	•	•

1 -
2 -

3

3.1

	+1.4
	31.5 ~ 8
	50
	<ul style="list-style-type: none"> • 30~80 (Lo) • 50~100 (Med) • 80~130 (Hi) • 30~130 (Auto)
	A/C
	FAST (125) QUICK (1)
	1,27
	<ul style="list-style-type: none"> • 4 • 0,1 • 2/
/	
()	«OVER» - «UNDER» -
	AC/DC AC=1 . . DC=10 /
	USB
	- 15
	9 006P NEDA1604 IEC 6F22.
	30
	0° ~40°
	10%RH~90%RH
	10° ~+60°
	10%RH~75%RH
	278 () x 76 () x 50()
	350

4

4.1

		- ,
1		1
2	USB	1
3		1
4		1
5		1
6	9 NEDA 1604, IEC 6F22.	1
7		1
8		1
9		1
10		1
11		1

5.
5.1.



.5.1.1


5.1.1

8852/51	
REC SETUP	
FAST/SLOW	/
A/C	/
MAX/MIN	/ .
HOLD	
LEVEL	
8852/51	
MAX	.
MIN	.
FAST	
SLOW	
UNDER	
OVER	
REC	
FULL	
dBA	-
dBC	-
	() " SETUP" ,
AUTO	
HOLD	
DATE	
TIME	

5.2.

5.2.1

1		
2		4-
3		<p>"REC", "REC"</p> <p>"REC" ,</p> <p>:</p> <p>"REC".</p>
4		.
5		

		FAST/SLOW
6	/	<ul style="list-style-type: none"> • / MAX • «MIN». • /
7		<p>“LEVEL”, : ‘LO’</p> <p>‘Med’ , ‘Hi’ ‘Auto’</p>
8		<p>/</p> <p>:</p>  <p>,</p> <p>,</p>
9		<p>() /</p> <ul style="list-style-type: none"> • , A. • dBA • C, <p>A/C.</p> <p>dBC.</p>
10		<ul style="list-style-type: none"> • HOLD, HOLD. • , HOLD, HOLD.
11	/	/
12		
13		
14		
15		
16		()
17		/
18		



12
13
14
15

16

17

.5.2.1

6

6.1.

-
-
-
-
-
-

(17 .5.2.1)
(17 .5.2.1)

9



9

3.5 9V

6.2

-
-
-
-
-

DT-8851

(11, .5.2.1),

-

(11, .5.2.1),

DT- 8852

(11, .5.2.1),

-

3

(11, .5.2.1),

6.3



(8 .5.2.1)

6.4

:

“ REC”.

-
-

“REC” (DT-8852/51
3 .5.2.1),

“ REC”

“REC”(3. .5.2.1)

6.5

-
-
-
-
-
-

.5.2.1).

REC (8852
3 .5.2.1).
(11, .5.2.1),

REC (3

REC(CLR.
3 .5.2.1).
CLR.

6.6

-
-
-
-
-
-

8851/52
SETUP (4 .5.2.1),
'TIME'
SETUP (4 .5.2.1)

: . 6.5.1

~~h-P~~
-30

.6.6.1

• SETUP (4 .5.2.1) , : . . .6.5.2

~~h-A~~
nn

.6.5.2

• LEVEL (7 .5.2.1),
• HOLD (10 .5.2.1), ()
• HOLD (10 .5.2.1),)
• SETUP (4 .5.2.1) , : . . .6.5.3

h-P

.6.6.3

• « » h-P=PM, h-A=A.M
• LEVEL (7 .5.2.1) « ».
• HOLD (10 .5.2.1), ()
• HOLD (10 .5.2.1),)
• SETUP (4 .5.2.1) , : . . .6.5.4

~~h-A~~

.6.6.4

• " "
• LEVEL (7 .5.2.1),
• HOLD (10 .5.2.1), ()
• HOLD (10 .5.2.1),)
• SETUP (4 .5.2.1) , : . . .6.5.5

~~h-P~~

.6.6.5

• « »
• LEVEL (7 .5.2.1), « »
• HOLD (10 .5.2.1),
• SETUP (4 .5.2.1) , : . . .6.5.6

~~h-A~~

.6.6.6

• « ».
• LEVEL (7 .5.2.1),
• HOLD (10 .5.2.1),
• SETUP (4 .5.2.1) , : . . .6.5.7.

.6.6.7

rSt

• HOLD (10 .5.2.1), :
• (11 .5.2.1).

6.7

DT- 8852/51

6.7.1

- Windows
- SL-8851.
- setup.exe.

- USB
- CP2102

6.7.2 USB

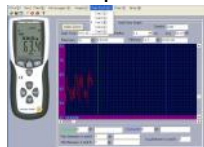
- CP210XWIN C:\usb_driver
- USB

- Windows C:\usb_driver .

COM3 or COM4.

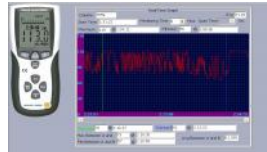
- USB, COMX CP210X .
- 

SETUP



.6.7.2.1

- REAL TIME\SETUP,



6.7.2.2

7

-
-
-

7.1

- (17 .5.2.1)
- (9 NEDA 1604 IEC 6F22)

7.2

-
-
-

8

8.1

» ()

«

